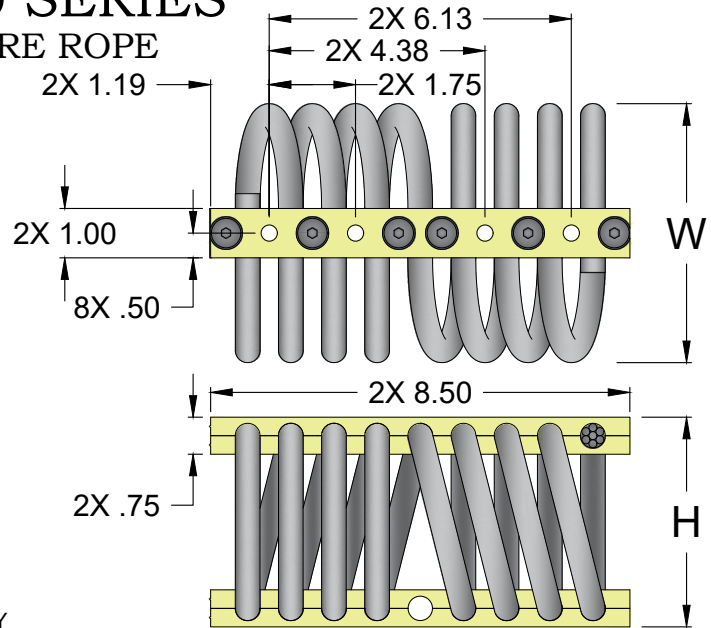
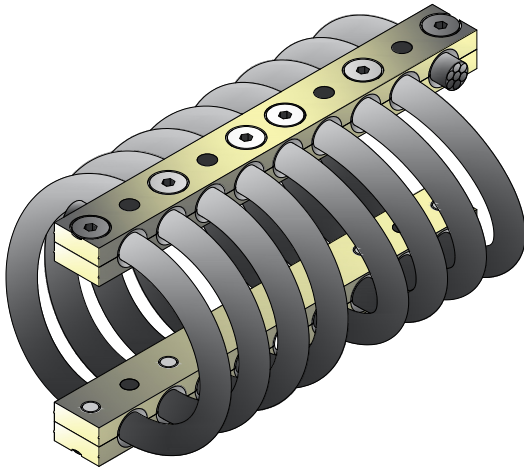


CB1400 SERIES

1/2" WIRE ROPE



NOTES

1. ALL DIMENSIONS ARE IN INCHES. INTERPRET PER ANSI Y14
2. ALL DIMENSIONS ARE NOMINAL AND FOR REFERENCE ONLY

| ISOLATOR PART NO. | NOMINAL H +/- 0.10 (in) | NOMINAL W +/- 0.10 (in) | LOAD MODE | SHOCK AVERAGE K (lb/in) | VIBRATION AVERAGE K (lb/in) | MAX. RATED DYNAMIC TRAVEL (lb/in) |
|-------------------------|-------------------------------|-------------------------------|-------------|-------------------------------|-----------------------------------|---|
| CB1400-10-[] | 3.00 | 3.31 | COMPRESSION | 3515 | 8550 | 1.10 |
| | | | SHEAR/ROLL | 1801 | 1785 | 1.10 |
| | | | 45 DEG. C/R | 1750 | 5000 | 2.00 |
| CB1400-12-[] | 3.00 | 3.63 | COMPRESSION | 3145 | 7500 | 1.20 |
| | | | SHEAR/ROLL | 1531 | 1750 | 1.20 |
| | | | 45 DEG. C/R | 1550 | 4600 | 2.00 |
| CB1400-15-[] | 3.25 | 4.00 | COMPRESSION | 2650 | 6525 | 1.40 |
| | | | SHEAR/ROLL | 1080 | 1475 | 1.60 |
| | | | 45 DEG. C/R | 1435 | 4350 | 2.40 |
| CB1400-17-[] | 3.50 | 4.13 | COMPRESSION | 2090 | 5000 | 1.60 |
| | | | SHEAR/ROLL | 865 | 1075 | 1.80 |
| | | | 45 DEG. C/R | 1120 | 3500 | 2.80 |
| CB1400-20-[] | 3.75 | 4.75 | COMPRESSION | 1365 | 3650 | 2.00 |
| | | | SHEAR/ROLL | 740 | 740 | 2.00 |
| | | | 45 DEG. C/R | 775 | 2445 | 3.20 |
| CB1400-25-[] | 4.00 | 5.00 | COMPRESSION | 1135 | 2950 | 2.20 |
| | | | SHEAR/ROLL | 580 | 650 | 2.20 |
| | | | 45 DEG. C/R | 650 | 1850 | 3.40 |
| CB1400-30-[] | 4.25 | 5.25 | COMPRESSION | 905 | 2250 | 2.40 |
| | | | SHEAR/ROLL | 420 | 560 | 2.40 |
| | | | 45 DEG. C/R | 525 | 1250 | 3.20 |
| CB1400-40-[] | 4.90 | 5.65 | COMPRESSION | 665 | 1700 | 2.80 |
| | | | SHEAR/ROLL | 320 | 425 | 2.80 |
| | | | 45 DEG. C/R | 400 | 1145 | 4.00 |
| CB1400-50-[] | 5.40 | 6.13 | COMPRESSION | 500 | 1250 | 3.20 |
| | | | SHEAR/ROLL | 260 | 380 | 3.20 |
| | | | 45 DEG. C/R | 245 | 750 | 4.40 |
| CB1400-60-[] | 6.10 | 7.10 | COMPRESSION | 265 | 525 | 4.00 |
| | | | SHEAR/ROLL | 145 | 165 | 3.60 |
| | | | 45 DEG. C/R | 165 | 360 | 5.20 |



JOB NAME:

CUSTOMER :

CUSTOMER P.O.:

SALES ORDER:

MODEL CB1400 SERIES WIRE ROPE ISOLATOR


VMC GROUP
 CONTROLLED ENVIRONMENT SOLUTIONS™

Bloomingdale, NJ Houston, TX Corona, CA Wind Gap, PA

DRAWING NO.:

REVISION:

SHEET:

SCALE :

1 OF 2

NONE

CB [] 1400 [] - 30 [] - C2

MOUNTING HOLE OPTIONS

OF COILS (BLANK = 8 COILS)

FAMILY SERIES SIZE (-15 THRU -50)

SPECIAL REQUIREMENTS (D*, R, F, J**)

FAMILY SERIES

WIRE ROPE REQUIREMENTS

BLANK = 302 STAINLESS STEEL (STANDARD), OR G, OR S

OF COILS (PATTERN OR PROFILE TO MATCH)

FAMILY NAME

SPECIAL REQUIREMENTS

| | |
|----------|--------------------------|
| D | DFARS* |
| F | THREAD FREE CABLE |
| G | GALVANIZED CABLE |
| J | ALT STYLE CONSTRUCTION** |
| M | METRIC INSERTS |
| R | RoHS |
| S | STAINLESS STEEL TOTAL |

* DFARS COMPLIANT RAW MATERIAL COMES FROM A LIMITED GROUP OF APPROVED SUPPLIERS AND IS NOT REQUIRED ON STANDARD PARTS.

** SUBJECT TO MANUFACTURER'S DISCRETION. CONTACT VMC FOR APPLICABILITY.

FEATURES & BENEFITS:

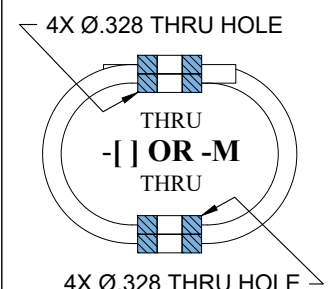
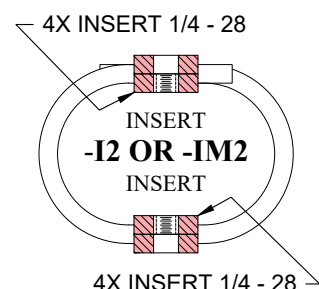
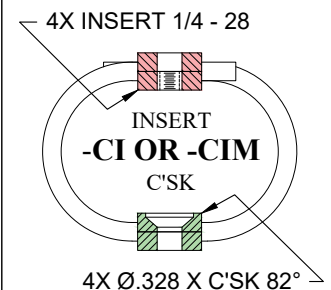
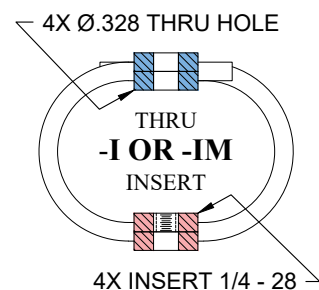
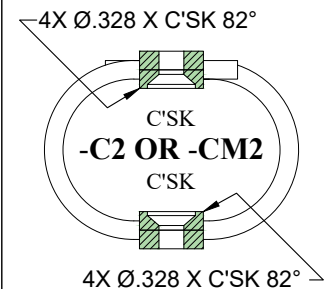
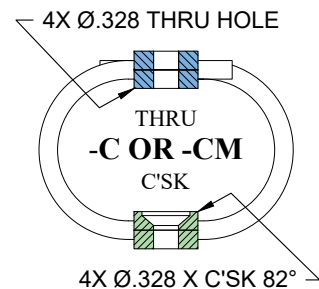
- WIDE RANGE OF AVAILABLE SIZES PERMITS ATTACHMENT TO ALMOST ANY MACHINERY OR ENCLOSURE REGARDLESS OF WEIGHT.
- COMPACT, LOW-PROFILE DESIGN AND THE ABILITY TO ATTENUATE HEAVY SHOCK LOADS WITH MINIMUM DEFLECTION ALLOWS USE WHERE SPACE IS AT A PREMIUM.
- THREE-PLANE, ALL-AXIS ISOLATION MEANS THAT EQUIPMENT IS FREE TO MOVE IN ANY DIRECTION - VERTICALLY, HORIZONTALLY, AND Laterally.
- CUSTOM WINDING, LOOP COUNT AND MOUNTING FEATURES ARE AVAILABLE TO MEET SPECIFIC REQUIREMENTS.
- OPERATING TEMPERATURE RANGE -400F TO +700F.

STANDARD MATERIALS / FINISHES:

- **WIRE ROPE MATERIALS:** SERIES 302 STAINLESS STEEL.
- **BAR MATERIALS:** ALUMINUM ALLOY 6061-T6, -T6510, OR -T6511 PER SAE AMS4113, SAE AMS4150, OR ASTM B221 WITH CHEMICAL CONVERSION COATING PER MIL-DTL-5541, CLASS 1A.

SPECIAL OPTIONS:

- **WIRE ROPE MATERIALS:** GALVANIZED, IMPROVED PLOW WIRE, PLASTIC FILLED VALLEY WIRE, INCONEL 600, STAINLESS STEEL TYPE 316, STAINLESS STEEL TYPE 305.
- **BAR MATERIALS:** STAINLESS STEEL, CRES TYPE 302, 303, 304, OR 304L WITH FINISH PASSIVATED PER QQ-P-35C TYPE II.
- **MOUNTING CONFIGURATIONS:** INSERTS, THREAD TYPES, CLEARANCE HOLES.
- CONTACT VMC FOR OTHER MATERIAL AVAILABILITIES.

MOUNTING HOLE OPTIONS:**M = METRIC** M C'SK = Ø.328 X 90° M INSERT = M6 X 1.0

JOB NAME:

CUSTOMER :

CUSTOMER P.O.:

SALES ORDER:

MODEL CB1400 SERIES
WIRE ROPE ISOLATOR



VMC GROUP
CONTROLLED ENVIRONMENT SOLUTIONS™

Bloomington, NJ Houston, TX Corona, CA Wind Gap, PA

DRAWING NO.:

REVISION:

SHEET:

SCALE :

2 OF 2

NONE